



**BRITISH
EVENTING**
Official Affiliated Event



Larkhill

Friday 4th - Sunday 6th April 2025



Photo by Ultimate Images



**PARKER
BULLEN**
SOLICITORS

Proud to support the British Eventing at Larkhill



Photo: Sandra Groves

Whether you need a lawyer for your family, property or business needs, you will be looking for a responsive, friendly and professional team to be on your side and help you over the final hurdle with ease.

With long standing credentials of helping the people of Wiltshire, Hampshire and Oxfordshire, we are extremely proud to support Larkhill British Eventing and wish all of the riders taking part today the very best of luck.

Contact the team today to see how we can support you.

Law from
every angle

info@parkerbullen.com
www.parkerbullen.com

With offices in Andover, Romsey,
Salisbury, Totton and Witney

**PARKER
BULLEN**



This is...
British Eventing

TOP CLASS TRAINING to maximise talent

CHAMPIONSHIPS at prestigious venues

LEAGUES with performance payouts



**British
Eventing**

britisheventing.com

GOLD STANDARD OF EVENTING

A MESSAGE FROM OUR PATRON



Welcome to Larkhill 2025. It seems the decision to run over three days has proved a popular one, with three full days to look forward to. Our thanks as competitors must go to the small army that will be turning out to make this possible. It is great to see the event thriving and so well supported.

I look forward to seeing you out there.

Have a great event.

- William



HINTON

WORKSPACE

RURAL WORKING RE-IMAGINED

WORK-LIFE BALANCE ISN'T ABOUT WORKING
LESS; IT'S ABOUT WORKING SMART

The Building Yard, Hinton St Mary, DT10 1NA

reception@hintonworkspace.co.uk

A MESSAGE FROM OUR ORGANISER



Welcome to Larkhill. I must start with my thanks this year, as adding the extra day has required a concerted effort from everyone. Our sponsors, our staff, our volunteers, our suppliers and our competitors –
THANK YOU.

It is great to see so many of you returning to Larkhill and welcome to those visiting for the first time. I hope you will find Larkhill as educational and encouraging as ever, all on our great Larkhill chalk downland turf. We have a stronger military presence this year, which is fabulous to see, with both the Army and the Royal Artillery teams riding, read about their successes later in the programme. We also have the Royal Artillery Equestrian Team managing the site and show jumping, the Royal Artillery Saddle Club on cross-country collecting ring, and the Royal Artillery Hunt Supporters delivering refreshments.

In the demanding environment we face, I hope we will provide you great sport. We are riding cross-country clockwise this year, so those early fences carry that extra challenge of heading towards the lorry park and then turning away from it. I hope you have a fantastic event.

- Andy



We are delighted to welcome you to our water treadmill facility at Woodland Farm Stables, in the heart of the Wiltshire countryside.

Whether you are looking to put greater power into your performance, sculpture correct muscle development or rehabilitate your equine partner,
we can cater for all your horse's requirements.

FMBS therapy systems provide leading technical products for horses and riders worldwide. Their state-of-the-art therapy equipment is designed to enhance

Single Session: £35.00

Power and Performance Package:

10% discount on water treadmill booking when booking 10 or more sessions.



If you would like to discuss anything, or to make an appointment, please contact us – we are more than happy to help.

**Elena: +44(0) 7772 826 666. Iain: +44(0)7986 527 585.
Bron: +44(0)7739 456 364**

Address: Woodland Farm, Marston, Wiltshire, SN10 5SP

EVENT INFORMATION

TIMETABLES

FRIDAY

	Novice	Novice	Open Novice	Intermediate Novice	BE100	BE100	BE90	BE90 Open
	Section A	Section B	Section C	Section D	Section E	Section F	Section G	Section H
DR	8:00	8:00	7:45	10:00	10:30	10:30	13:00	13:00
SJ	9:00	9:00	9:00	12:40	13:40	13:40	16:05	16:05
XC	9:45	9:45	9:45	13:32	14:30	14:30	16:50	16:50

SATURDAY

	BE100	BE100	BE100 Open	BE100 Open Under 18	Pony Trial Novice	Open Novice Under 18	Novice	Novice
	Section I	Section J	Section K	Section L	Section M	Section N	Section O	Section P
DR	8:00	8:00	8:00	8:00	10:30	13:30	13:00	13:30
SJ	8:40	8:40	8:40	8:40	14:15	15:05	15:05	15:05
XC	9:30	9:30	9:30	9:30	15:10	15:10	15:10	15:10

SUNDAY

	BE90	BE90	BE90	GO90	BE90 Open Under 18	BE100	BE100	GO100
	Section Q	Section R	Section S	Section T	Section U	Section V	Section W	Section X
DR	8:00	8:00	8:00	8:00	9:00	11:00	11:00	11:00
SJ	8:40	8:40	8:40	8:40	8:40	14:25	14:25	14:25
XC	9:30	9:30	9:30	9:30	9:30	15:10	15:10	15:10

For schedule see EventingScores.co.uk

[Click here for Health & Safety Pages](#)



ST FRANCIS SCHOOL



one childhood,
many opportunities

EVERY DAY IS OPEN DAY

Come and visit the magical St Francis School; a coeducational school for children aged 0-13. Set in the heart of the Pewsey Vale with a Forest School and 17 acres of picturesque grounds to explore.

Limited number of Reception places still available.

Marlborough Rd | Pewsey | SN9 5NT | admissions@stfpewsey.co.uk | 01672 563228

DRESSAGE TESTS

BE90, BE90Open, BE90Ou18, GO90 ----->	BE96 (2016)
BE100, BE100Open, BE100Ou18, GO100 ----->	BE102 (2010)
N, ON, PTN ----->	N110 (2012)
ONu18 ----->	N114 u18 (2016)
IN ----->	I115 (2011)

PRIZES

Standard prize money for all classes. Prize money form on [Eventing Scores](#).

Collect from the Event Secretary's office:

Winner IN	90-day supply of SUCCEED digestive conditioning programme.
Winner N and BE90 Sections	EquineBioGenie hoof disinfection spray.
Winner BE100 Sections	KeyflowFeeds Pink Mash starter pack.
Winner BEu18 Sections	A free visit to ClarendonStud stallions and foals, including a schooling session on their show jumping course and 50% discount on Pennine View Z Concorde or Silver Concorde covering fees.

ROSETTES

Collect from the Event Secretary's office:

Rosettes to 6th place.

All GOBE entries qualify for a rosette on completion.

If placed 7-10 and you would like a rosette, please ask at the Event Secretary's office.



WHERE IDEAS GROW

Develop your equine knowledge and graduate skills with our range of equine courses, from post 16 to degree and postgraduate.

We are a BHS Approved Equine Centre and have superb facilities, including our Rider Performance Studio and Racewood Eventing Simulator.

If you select University Centre Sparsholt as your first or second choice for your degree on UCAS, you are guaranteed a space on our DIY Livery Yard at our Equine Centre.

FdSc Equestrian Performance and Business Management

BSc (Hons) Equine Science and Welfare

BSc (Hons) Equestrian Performance and Business Management

MSc Equine Behaviour, Performance and Training

FIND OUT MORE AND APPLY NOW
SPARSHOLT.AC.UK/UNIVERSITY-CENTRE



GENERAL INFORMATION

The Rules

BE Larkhill is run under British Eventing Rules and Regulations.

Disclaimer of liability

Except for the negligence of the Organiser and their agents or others for whom in law they are responsible, the Organiser does not accept responsibility in respect of any accident, illness or disease caused to or suffered by any horse, owner, rider, spectator, sponsor, and others present at the site of the Event and their property and accoutrements.

Reservation of right

The Organiser has the power to:

- Cancel or divide any class or transfer competitors between sections or of a class;
- Alter the advertised times; or
- Refuse any entry.

Salisbury Plain Training Area

Salisbury Plain is a military training area and live firing range.

Please:

- only use signed tracks;
- do not touch any suspicious objects;
- watch out for overgrown trenches and craters; and
- give way to military training and range staff.

DARE TO SUCCEED®?

Be performance ready with a once-a-day, every day nutritional program for optimal digestive health in horses.



SUCCEED is my safety net. When I know my horses are receiving SUCCEED daily, it tells me that their insides are being looked after. The horse is the most important part of the equation. If they're not functioning at or above 100 percent, how can we ask them to perform for us?

- LISSA GREEN



"SUCCEED is not just for the horse, it's for me. There are so many things about the horse's digestive tract that we don't understand and can't see. SUCCEED means those things are under control."

- LUCINDA GREEN



"SUCCEED helps the horses maintain their weight and simply stay healthier—even when at peak fitness. The horses don't appear to go off their feed and seem easier to feed and manage."

- BILL LEVETT

Excellent digestive tract health with SUCCEED® supports:

IMMUNITY & RESILIENCE

Digestive tract health impacts strong immunity as well as the horse's ability to handle travel and performance stress well.

WEIGHT & CONDITION

Maintain a healthy appetite, good nutrition, proper weight & muscle, and quick recovery.

BEHAVIOUR

Total digestive health can transform how a horse handles itself in a stable, traveling, on the ground, and under saddle.



For a SUCCEED® Digestive Conditioning Program™ trial contact:

Emma Hardy UK - 07850176119
ehardy@freedomhealthllc.com

SUCCEED®

Digestive Conditioning Program®

Every horse at its best!™

succeed-equine.co.uk

THE BE LARKHILL 2025 SPONSORSHIP TEAM

A huge thank you to our wonderful team of sponsors who remain committed to supporting BE Larkhill and the development of this unique site.

If you wish to join our sponsorship team, please get in touch!

OUR FANTASTIC HEADLINE SPONSOR

Parker Bullen Solicitors
Parkerbullen.com

CLASS SPONSORS

Novice Class:
[Fawcetts Accountants](#)

BE100 Class:
[Hunt Forest Group](#)

Under 18 Sections:
[Clarendon Stud](#)

FENCE SPONSORS

Woodland Farm Equestrian
[WoodlandFarm](#)

University Centre Sparsholt
[Sparsholt.ac.uk](#)

St Francis School, Pewsey
[StFrancisPewsey.co.uk](#)

Period Metal Windows
[PeriodMetalWindows.co.uk](#)

A NEW TEAM OF PRIZE SPONSORS FOR THIS YEAR

EquineBioGenie
N/BE90 Sections

KeyFlowFeeds
BE100 Sections

Succeed
IN 90 Section

ClarendonStud
BEu18 Sections

[Click here to see prizes](#)



Fawcetts
CHARTERED ACCOUNTANTS
AND BUSINESS ADVISERS

An Accountancy Firm that actually knows the difference between a Fetlock and a Forelock!

Fawcetts LLP are different. We've been looking after the financial interests of equine and rural enterprises for many years, so the tax and business advice we offer is based on years of experience in helping specialist countryside businesses to achieve their maximum potential.

We understand the particular detailed pressures facing the equine industry and can advise you on the most appropriate steps to meet these challenges.

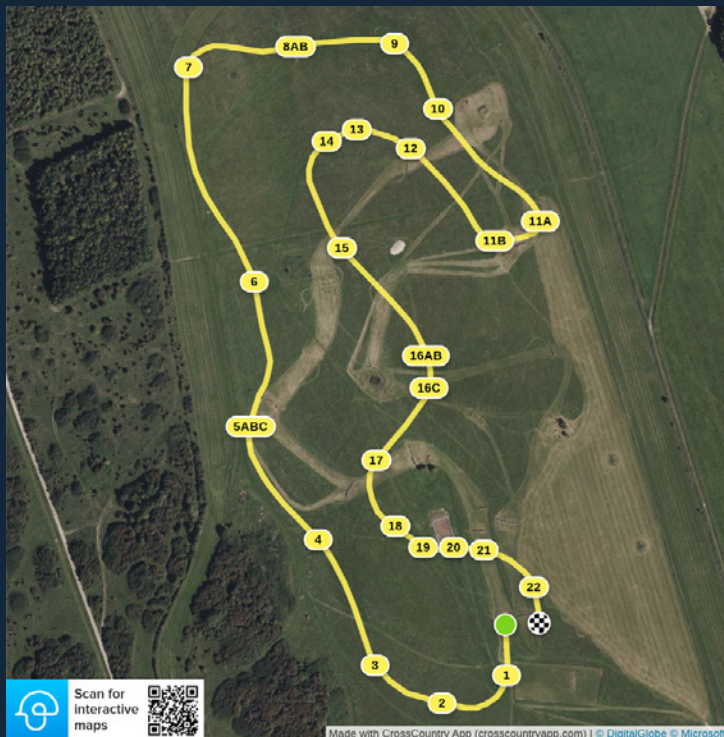
For specialist equine accounts, VAT and tax advice speak to our Equine and Rural affairs team now.

**Fawcetts LLP:
Helping you to be first to the winning line**

Main Office:
Windover House
St Anns Street
Salisbury
SP1 2DR

Telephone: 01722 420920
www.fawcetts.co.uk

FAWCETTS NOVICE COURSE MAP & FENCE LIST

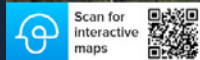


Larkhill BE 2025 Novice

Speed: 520 m/min

- 1 Log
- 2 Hunt Forest Group pheasant feeder
- 3 Roller
- 4 Haycart
- 5A St Francis School house
- 5B Step-down
- 5C House
- 6 Log on mound
- 7 Woodland Farm Equestrian picnic table
- 8A Step-up
- 8B Rail
- 9 Period Metal Windows saddle horse
- 10 Trakehner
- 11A Pennine View Stallions brushed log
- 11B Brushed stump
- 12 Roll top
- 13 Shoulder brush
- 14 Shoulder brush
- 15 Log
- 16A Table
- 16B Fawcetts corner
- 16C Skinny triple bar
- 17 Brush
- 18 Log on mound
- 19 Parker Bullen log into water (B/F Alt)
- 20 Log
- 21 Log
- 22 University Centre Sparsholt flower box

Made with CrossCountry App (crosscountryapp.com) | © DigitalGlobe © Microsoft



View the course and listen to a virtual course walk with Warren Lamperd [at CrossCountry App](#)

**Performance Stallions,
from top International breeding lines,
producing proven progeny**



info@ClarendonStud.uk
07715 115164 / 07808 293847
ClarendonStud.uk



PennineView Silver Concorde

4* EVENTER - Stud Fee £650

- 16.2hh 2009, SHB Stallion - 71% TB
- Sire to graded SHB Stallion & 2* International eventer
- Concorde, Ramiro Z, Voltaire, Silver Wizard (TB) •

PennineView Bee Spritely

2* EVENTER - Stud Fee £500

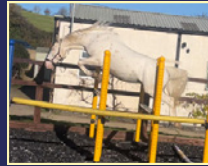
- 16hh 2015, SHB - 67% TB
- Sister International 4*, Father 4*
- Uncle Opposition Buzz 5*
- Concorde, Ramiro Z, Fulton, Java Tiger •



Z Concorde (1.40)

SHOWJUMPER - Stud Fee £500

- 17hh 2004, AES- 43% TB
- Son 4* eventer, daughter won GYS
- Concorde (1.60) • Ramiro Z (1.60) •
- Voltaire (1.60) •



Silverlinings St George

• Unique Cremello Leopard Spot - Stud Fee £500 •

- 16.1hh 2016, Cremello Leopard spot
- GFS Fire and Ice, Crowns Ace of Pearl •
- Rock King, Just a Monarch •




Clarendon Stud @ Teffont, Wiltshire

Offering full breeding service, taking mares in for foaling, and insemination with fresh, chilled and frozen semen. Over 50 years breeding experience, top facilities, 24hr live cameras, large rubber matted foaling boxes.

info@ClarendonStud.uk
07715 115164 / 07808 293847
ClarendonStud.uk



PONY TRIALS NOVICE MAP & FENCE LIST



**Larkhill BE 2025
Pony Trials Novice**

Speed: 520 m/min

- 1 Log
- 2 Hunt Forest Group pheasant feeder
- 3 Roller
- 4 Blue table
- 5A St Francis School house
- 5B Step-down
- 5C Shoulder brush
- 6 Log on mound
- 7 Woodland Forest Equestrian picnic table
- 8A Step-up
- 8B Rail
- 9 Period Metal Windows saddle horse
- 10 Trakehner
- 11A Pennine View Stallions brushed log
- 11B Brushed stump
- 12 Roll top
- 13AB Shoulder brush
- 14 Log
- 15A Open oxer
- 15B Fawcetts open corner
- 15C Skinny triple bar
- 16 Brush
- 17 Log on mound
- 18 Parker Bullen log into water (B/F Alt)
- 19 Brush nest
- 20 University Centre Sparsholt flower box

Scan for interactive maps

Made with CrossCountry App (crosscountryapp.com) | © DigitalGlobe © Microsoft

View the course and listen to a virtual course walk with Warren Lamperd
at [CrossCountry App](#)

VEHICLE & MACHINERY

SALES, SPARES & SERVICE AT YOUR JOHN DEERE LOCAL DEALER



SALES

- AGRICULTURE
- LAWN & GARDEN
- CONSTRUCTION
- GOLF & PROFESSIONAL TURF
- ISUZU D-MAX

SPARES

- REPLACEMENT PARTS
- OILS, GREASE & LUBRICANTS
- LICENSED MERCHANDISE
- 4X4 ACCESSORIES
- OVERNIGHT DELIVERY

SERVICE

- MOWER SERVICING
- 4X4 SERVICING
- DEDICATED AG & TURF TEAM
- BLADE SHARPENING
- TRAILER SERVICING



HUNT FOREST
GROUP



@huntforestgroup

Email us at info@huntforest.com
Visit us online at www.huntforest.com

Find your local Hunt Forest Group branch at

TILSHEAD

High Street, Tilshead, Salisbury,
Wiltshire, SP3 4RX

Tel: 01980 621 114

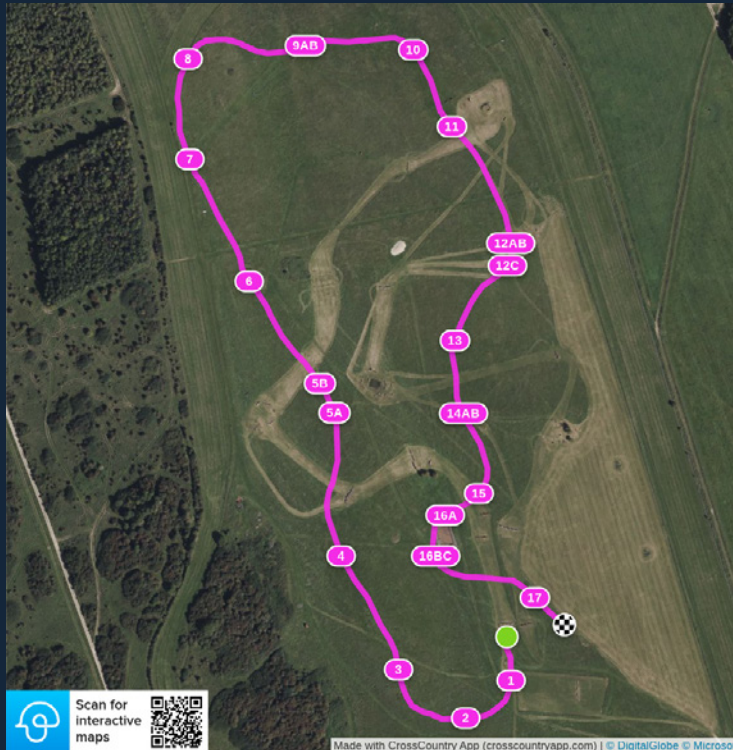
Opening hours:

Monday – Friday: 8.00am – 5.00pm

Saturday: 8.00am – 12.00pm



HUNT FOREST GROUP BE100 COURSE MAP & FENCE LIST



Larkhill BE 2025 BE100

Speed: 475 m/min

- 1 Log
- 2 Hunt Forest Group pheasant feeder
- 3 Roller
- 4 Haycart
- 5A St Francis School house
- 5B House
- 6 Log on mound
- 7 Brush
- 8 Woodland Farm Equestrian picnic table
- 9A Step-up
- 9B Rail
- 10 Period Metal Windows saddle horse
- 11 Trakehner
- 12A Rail
- 12B Pennine View Stallions step-down
- 12C Nest
- 13 Corner
- 14A Fawcetts table
- 14B Skinny
- 15 Log
- 16A Roll top
- 16B Parker Bullen step-up
- 16C Roll-top
- 17 University Centre Sparsholt flower box

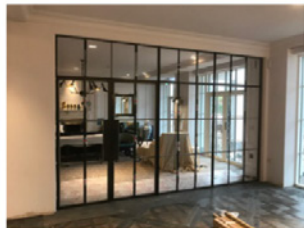
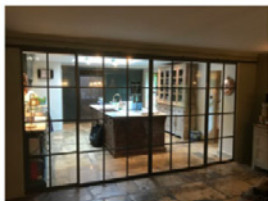
View the course and listen to a virtual course walk with Warren Lamperd
at [CrossCountry App](#)

The Period Metal Window Company

01666 510745 or 07740307920
gareth.dyer@periodmetalwindows.co.uk

www.periodmetalwindows.co.uk

Why Steel? Style, Security & Elegance:
Just three of the reasons why steel is a material
of choice for windows for your home.



Steel Windows are easily fitted into your original timber frames
or directly to stone or brick work, the glazing is thermally efficient
and complies with the latest Building Regulations.

10 Year Insurance backed warranty



gareth.dyer@periodmetalwindows.co.uk
01666 510745 or 07740 307920
Fax 01666 336506

FENSA
Registered Company 33083

The Period Metal Window Company Ltd
Malthouse Lodge Farm, Brinkworth, Chippenham, Wiltshire.
SN15 5DA

BE90 COURSE MAP & FENCE LIST



Larkhill BE 2025 BE90

Speed: 450 m/min

- 1 Log
- 2 Hunt Forest Group pheasant feeder
- 3 Wedge
- 4 Haycart
- 5A St Francis School house
- 5B House
- 6 Log on mound
- 7 Brush
- 8 Woodland Farm Equestrian picnic table
- 9A Step-up
- 9B Rail
- 10 Period Metal Windows saddle horse
- 11 Trakehner
- 12A Pennine View Stallions step-down
- 12B Step-up
- 12C Nest
- 13 Corner
- 14 Fawcetts table
- 15 Barn
- 16A Roll top
- 16B Parker Bullen water
- 16C Roll-top
- 17 University Centre Sparsholt flower box

View the course and listen to a virtual course walk with Warren Lamperd
[at CrossCountry App](#)



The home of
Royal Artillery Equestrian
Sport

Royal Artillery Saddle Club

‘delivering equestrian
opportunities to service
personel, their families and
veterans.’



www.rasaddleclub.com

Registered Charity 1169361

Royal Artillery Equestrian Team

Larkhill Eventing's generosity has helped the RAET achieve some of its most notable results yet. It offset some of our competition costs and helped fund our partnership with 4* Eventer Diana Burgess who joined the Team as our coach this year, and it certainly paid off!



Our headline success was achieving our top objective in winning the Army Equestrian Inter-Corps League, which was underpinned by some exceptional results throughout the season. Here are just a few: **Charlotte Pudge** won the Services Jumping at the London International Horse Show. **Scott McDermott** placed 3rd overall in the Army Grassroots League Combined Training and has recently been selected for the Army Dressage Team.

Harriet Chapman, Liz Griggs and **Lauren Sweetland** secured Introductory Champion, Medium Class win and Overall Reserve Champion respectively at the UK Armed Forces Dressage Championships. At the Army Championships **Harriet Chapman** won Army Grassroots (70cm) Champion; at the Navy Championships **Charlene Davey** achieved Novice (80cm) Reserve Champion; at the UK Armed Forces Equestrian Championships **Lisa Leighton** won the 80cm Combined Training Class; at the Army and Royal Artillery Hunter Trial the team dominated the 80cm class with **Lisa Leighton** winning, **Liz Griggs** placing 2nd and **Harriet Chapman** rounding out the top in 3rd place and finally, at the British Dressage Associated Championships **Liz Griggs** secured Elementary Bronze Champion and Medium



Royal Artillery Equestrian Team



Incredible doesn't cover the enormity of what our riders and horses have achieved this year. Our determined people continue to support each other in every discipline and that is made possible by Larkhill Eventing. Your continued support of this event means the world to us. We look forward to seeing you competing over the weekend as we volunteer across a number of roles.

Please say hello if you see us!



“ **Build a team**
you can trust
so you can focus
on the riding. ”

Jonelle Price
#TeamKeyflow

Want to spend more time chasing
sub 30s and double clears?

Keyflow Feeds deliver more
nutrients, require lower feeding
rates and are easier for horses to
digest.

advice@keyflowfeeds.com
keyflowfeeds.com

Keyflow
Redefining Equine Nutrition



EVENT OFFICIALS

JUDGES & OFFICIALS

BE REGIONAL COORDINATOR	Adrian Ditcham
BE STEWARD	Jonathon Seed
BE TECHNICAL ADVISOR	Adrian Ditcham
ORGANISER	Andy Welsh
SITE MANAGER	Ken Knight
HEALTH AND SAFETY STEWARD	Hamish Mathews
HEALTH AND SAFETY ASSISTANT	Dom Mathews
EVENT SECRETARY	Lisa Leighton
ENTRIES SECRETARY	Raff Mackay
SCORER	Miranda Collett
ASSISTANT SCORERS	Haley Cole, Sue Bowie, Maureen Collett, Yvonne Hales-Hunt, and Lucinda Hill
HEAD OF MEDIA	Annabel Mead
HEAD OF SPONSORS	Ali Welsh
HEAD OF VOLUNTEERS	Lucy Slater
FEEDING TEAM	Royal Artillery Hunt Supporters
ENTRANCE AND PARKING	Royal Artillery Equestrian Team

MEDICAL SERVICES

MEDICAL OFFICERS	Dr Katherine Hartington, Dr Linsey Whitely, Dr Holly Day
PARAMEDICS / FIRST AID	SES MedEvent
VETERINARY OFFICER	Jo Strong
HORSE AMBULANCE	Robert Hall Equine Ambulance
FARRIER	Henry Middleton

EVENT OFFICIALS

DRESSAGE

CHIEF STEWARD

Tim Tipping

FRIDAY

JUDGES: Helen Evelyn-Wood, Sophie Gregory, Emily Clarke, Jane Tolley, Ros Dobson, Shena Kozuba-Kozubaska, Lyn Barley, Caroline Lycett.

WRITERS: Lucie Swan, Angela Gregory, Dani French, Sophie Edwards, Alice Whiting, Lou Whiting, Alex Neville.

STEWARDS: Alison Geeves, Andrew Lovell, Lou Whiting, Alice and Molly Rattue.

SATURDAY

JUDGES: Charlotte Clarke, Jane Tolley, Sue Bacon, Sophie Gregory, Shena Kozuba-Kozubaska, Lyn Barley, Caroline Lycett.

WRITERS: Sara Glazebrook, Heidi Cadman, Dani French, Angela Gregory, Pauline Moylan, Julie Bassett, Lucie Swan.

STEWARDS: Lou Whiting, Georgie Mason, Emily Chomicz, Kate Ingram.

SUNDAY

JUDGES: Jane Tolley, Sue Bacon, Judith Goold, Jenny Pickup, Ros Dobson, Helen Evelyn-Wood, Lyn Barley.

WRITERS: Ali Wilson, Angie Beloe, Mary Pickuo, Joanna Hicks, Julia Andrews, Mel Howett.

STEWARDS: Sue Hanson, Rachel Philp, Jane Slatter, Karen Kempshell.



@EMOTIONEQUINETHERAPY

E-Motion Equine Therapy
Equine Chiropractor 07876752205

EVENT OFFICIALS

SHOW JUMPING

CHIEF STEWARD	Sheelagh Roberts
JUDGES	Clare Brown, Teresa Tanner, Clare Barber.
COURSE DESIGN AND BUILD	Adrian House
WARM-UP RING STEWARDS	Toni Dalling, Naomi Tettman, Jem Manders
ARENA PARTY	Royal Artillery Equestrian Team

CROSS COUNTRY

COURSE CONTROL	Roly Rickord
CONTROL TEAM AND COMMENTATORS	Carole King, Sally Bull, Liz Hills, David Luck, Jemima Stratton
STARTER	Fi Boughton
START TEAM AND TIMEKEEPERS	Steve Boughton, Di Woodward-Hunt, Lizzie Webster, Chris Raybould, Sam Little
CROSS-COUNTRY STEWARDS	Tim and Marijka Donovan.
COURSE DESIGNER	John Hoare
COURSE BUILD AND FENCE REPAIR	John Hoare, Will Smithers, Dan Fitchett, Rupert Hicks and Matt Lynch
COLLECTING RING STEWARDS	Gill Ball and Royal Artillery Saddle Club



OPTIMAL EQUESTRIAN PERFORMANCE



TAKE THE REINS OF YOUR RIDING PERFORMANCE

WHO WE ARE

Strength & Conditioning (Fitness)
services bespoke to equestrian riders.

Henry is an expert at working with riders, as he blends his unique combination of equestrian and S&C knowledge to provide you with the highest quality service.

QUALIFICATIONS

- MSc Strength & Conditioning
- BA (Hons) Sports Science
- Certified Personal Trainer

SKILLS

- Coaching Excellence
- Adaptable
- Friendly & Professional

OUR SERVICES



STRENGTH & CONDITIONING



Fully customised training, to optimise performance and minimise injuries
(delivered in person or online)



GALLOPING GAINS



Online
Rider Specific
Strength & Conditioning Group Classes

SCAN TO VIEW OUR WEBSITE



Phone: +44 (0)7928179092

Email: info@optimalequestrianperformance.com



FENCE JUDGES

FRIDAY

Ros Stockdale & Kelly Young, Simon Helliwell & daughter Dulcie, Naomi Tettmann, Steve Gifkins, Becky Miles, Gill Main & Husband, Mark Rowland, Michael Watson, Louise Hall, Sandra Barnes, Anne Dawson, Kathie Bishop & Julian (Husband) , Annie Assheton & Mia Loweth, Susan Maskell, Jill Coombes & Rob, Jan Humphries, , Tony Humphries, , Jenny Cox, Jan Noonan, Rachel Duglan, Janet Coe, Corinna Matthews, Rebecca Markwick, Anna Youens, Lucinda Sims, Shirley Carr, Pat Dobbin, Evelyn Bateman, Catherine & Bill Lockwood, Louise Duke & Friend, Natasha Nash, Kikki Stanard & Friend, Val Allright & Simon Organ.

SATURDAY

Julie Price, Lesley Scutter, Pippa Eygelsheim, Bronwen Jones and Iain Greer, Catherine Lockwood & Bill Lockwood, Meredith Baker & Sue Baker (Mum), Penny Towers & Angie Clark, Hannah Jones, Simon Andrews, Paul Webber & Sara Harding, Sarah Maskell, Louise Hall, Jan Horley, Anthony Gilbert & Ellie and Amelia. Sarah Whitfield, Frances King, Trevor Moores, Carmel Moores, Tim Page, Mary Balfour & Tina Hobbs, Sam Painter & Sara Morley, Sara Brooks & David Webster, Janet Coe, Amy Scrivener & Denise Scrivener, Emma Coombes and Deborah Pratt.

SUNDAY

Lesley Scutter, Pippa Eygelsheim, Janis Weal and Caroline Bundy, Claire Charlesworth, Jo Ayriss, Catherine Lockwood & Bill Lockwood, Ros Stockdale & Kelly Young, Philippa Watkins, Ruth Dresman, Victoria Hardwick & Rosie Bailey & Poppy Blake & Stanislav Rayeuski, Sherryl Haensel & Dan, Fiona Gifkins & Nichola Churches, Anna Layton & Caroline Jerram, Victoria Sheriff & Niki, Gill Main & Jo King, Melanie Watson & Pippa Best and Marcia Fairless, Anne Dawson, Frances King, Kay Neale & Steve, Susan Maskell, Jill Coombes & Rob, Rena Luton & Chris, Janet Coe, Josie Colin, Virginia.

LOCKWOOD SMOCKS



**COME AND CHAT, I HAVE
FREE SNACKS!**

**100% WATERPROOF AND MADE IN BRITAIN.
VISIT US ONLINE!
LOCKWOODSMOCKS.COM**

LOCKWOOD
-PREMIUM BRITISH SMOCKS-

TRADE STANDS

TOP GUN CATERING

Mark and Lindsay Nightingale

KARLA'S CONES

Karla Molony

COFFEE GUYS

James Paginton

COFFEE TO GO GO

Marcus Hartnell

OPTIMAL EQUESTRIAN PERFORMANCE

Henry Carter

ALBI-EQUESTRIAN TACK SHOP

Kim Albone

NIDGE'S ARTIZAN PIZZA KITCHEN

Nigel Male

LOCKWOOD SMOCKS

Jacob Lockwood

HUNT FOREST GROUP

Stewart Banks & Vicky Lane

LEADING DOG

Laura Meudell



Proud coach to The Royal Artillery Equitation Team

Services from Lucinda Fredericks

Equestrian include:

Training

**Livery - competition,
backing & sales livery**

Stallion services



marketing@lucindafredericks.com / 01380 816636

www.lucindafredericks.com

SCHOOLING AT LARKHILL

CROSS-COUNTRY SCHOOLING AT LARKHILL

We provide schooling throughout the year. All schooling is booked online at Horse Events. Please follow this link www.horse-events.co.uk

COSTS FOR UP TO 1 HOUR ON THE COURSE

£30 per horse
£20 per horse for military dependants
Free for serving military and veterans

2025 SCHOOLING DATES

13 th April	90/100/110
21 th April	90/100/110
5 th May	90/100/110
25 th May	60-70/80/90/100/110
26 th May	60-70/80/90/100/110
25 th August	60-70/80/90/100/110
28 th September	60-70/80/90/100/110



BE Master Coach

**UKCC L4 British
Showjumping**

MSc Coaching Science

**British Showjumping
Excel Talent Coach**

Five Star Event Rider

Warren Lamperd

**Professional coach and Five Star Event Rider
and Showjumper.**

**For coaching, call 07812193747 or
warren@whitehartstables.com**

07812193747

HEALTH AND SAFETY

The Organiser of this Event has taken reasonable precautions to ensure the health and safety of everyone present. For these measures to be effective, everyone must themselves take all reasonable precautions to prevent accidents and must comply with any instructions given by the Organiser, Officials and Stewards. The health and safety steward, Hamish Mathews, can be contacted via the Event Secretary, or any other Larkill Eventing staff.

Health and safety policy

General

1. The Horse trials organiser, named in the programme, has overall responsibility for health and safety and appoints a Health and Safety steward, also named in the programme, to ensure that all the appropriate health and safety and safety legislation is complied with.
2. The Horse Trials organiser, named in the programme undertakes to run the competition in accordance with the British Eventing rules and guidance.
3. The Horse Trials organiser is required to ensure all chief Stewards have received, read and understood the relevant section of the guidance to ensure they are aware of the requirements and standards for their area of responsibility.
4. The Health and Safety Steward (primary) and the Organiser are required to ensure the area of competition and those accessible to the public and other Officials are (so far as is reasonably practicable) subject to a risk assessment and that this, as a record of the actions taken, is documented in the events health and safety plan.

Officials

5. Stewards, judges and officials are briefed in their duties and provided with therelevant equipment to carry out their duties.
6. They are required to bring to the attention of the Health and Safety Steward any concerns they have for the Health, Safety and Welfare of the public, competitors and the officials.
7. They are required to conduct themselves in such a manner not to put their self or anyone else at risk and maintain control of the area around their location.



THE
WHITE HORSE
FREE HOUSE

The Heart of Hinton

"What a fantastic find!

Lovely old fashioned country pub with a superb kitchen and amazing staff..... highly recommended and worth travelling considerable distance for!"

THE WHITE HORSE

White Horse Lane, Hinton St Mary,
Dorset, DT10 1NA

01258 915001 | info@thewhitehorsehinton.co.uk

HEALTH AND SAFETY

8. The BE Technical Adviser, BE Steward or Health and Safety Steward are required to ensure the Officials are properly briefed in their duties and are properly equipped.

Spectators

9. Spectators are requested to take heed of official instructions and guidance, paying particular attention to stewards on the XC course. Always keep your dogs under control and on a lead.

Contractors

10. All contractors working at the Event are required to observe best working practice, comply with all legislation relevant to their business and take all reasonable and practical steps to safeguard their employees and those attending.

Trade Stands

11. All trade stands are responsible for the safety of their own stands and the risks that they may pose to other persons within the allocated space or immediate surrounding areas. This is subject to monitoring by the Health and Safety Steward and Organiser.

EMERGENCIES

The emergency services at the event include the doctors, ambulances, vet and fence repair personnel. They have access to all parts of the site and can be quickly contacted through any steward, judge or official.

Accidents involving horses and competitors are catered for and the appropriate officials are ready to report these as they occur and to call appropriate emergency services.

Emergencies not connected with the competition may be dealt with by the emergency services. Such emergency calls can be made by any official.

Pure & Secure WATER for your Horse

Make cleaning out your
TROUGH a thing of the past!

Kills STRANGLES

Oxygenates the water -
no chemical residue

100% Bio
Degradable

Banishes ALL waterborne
Bacteria & Viruses

Prevents build up of algae -
keeps water clear and clean

Silver stabilised H2O2

Drinkers & buckets

1 Litre
£19.95



EQUINE BIO+



WWW.EQUINE-BIO-GENIE.CO.UK
Tel: 07796 358 202



Time to change from harmful products.

HIGH EFFICACY ZERO TOXICITY

NO CHLORINE NO BLEACH



HOW TO USE

- For best results empty your trough (for the last time!)
- Clean your trough inside, allow to refill to at least halfway
- Dosage 100ml to 100 Litre of Water
- Apply every 2/3 weeks (if higher contamination apply more often)
- Horse can safely drink immediately after application

UNIQUE

Removes biofilm that has built up with the constant use of chlorine. Biofilm harbours pathogens in water, such as pseudomonas aeruginosa

TRUSTED BY PROFESSIONALS

Used by Equine Professionals & Vets with 5 star reviews. An exciting new product!

CONTACT

WWW.EQUINE-BIO-GENIE.CO.UK
Tel: 07796 358 202
www.equine-bio-genie.co.uk

KEY FEATURES

- Silver Stabilised Hydrogen Peroxide
- No Chemical Residue
- Organic Compliant
- Medical Grade - ISO 13485
- 100% Sustainable
- Non Corrosive & Non Toxic
- Food safe
- No Microbial resistance - kills all pathogens
- Odourless and Tasteless

